

The image displays a musical score for the piece "Hüseyinî Peşrevî" by an unknown composer (Bestekârı meçhûl). The score is written in G major (one sharp) and 2/4 time. It consists of 11 staves of music. The first staff begins with a treble clef, a key signature of one sharp (F#), and a time signature of 2/4. The notation includes various note values (quarter, eighth, and sixteenth notes), rests, and bar lines. The piece is marked "Devr-i kebir" (Great Cycle). The score is divided into two sections: the first section consists of 8 staves, and the second section, labeled "2. Hane." (2. Phrase), consists of 3 staves. The notation is in a traditional style, with notes and rests clearly marked on the staves.



3. Hane.



4. Hane.



Şeş ne . ze ned . . . . . der di . li ma . . .  
 Kū teh ne kū ned . . . . . men zi li mā

. . . . . il lā . . hu ca ni . . . . . men vay  
 il lā . . hu ca ni . . . . . men vay

Ger ā le . mi yan . . . . . cūm le . ta bi . . . . .

. . . . . ban ba . . şed ca ni men . . vay

Hal li ne . kū ned . . . . . müş ki . li ma . . . . .

. . . . . il lā . . hu ca ni men . . vay

hey ya rim me . ded . . . . . ih san me ded . .

. . . . . guş ran me ded . . . . . hey ca . ni men  
 . . . . . hey mi ri men

. . ger seb . ze i . . rani . mera . . . . . gūl ber ki . teri . .

. . dost şa . . dū mā . . . . . nem ki . re sid . . . . .

. . . . . en der . mü ra . . . . . di hış . ve li . . . . .

. . . . . hey ça . re i . . . . . en der mü ra . . . . . di ya . . ri men

im ruz . . . se ma . . . . . est . . . : se ma

. . . . . est . . . . . se ma . . . . . ve fa ne . da . .

ri . hey hey za lim hey nu res tû . şü a . . . .

. . . . . est . . . şü a . . . . . est . . . . . şü a . . . .

ve fa ne . da . . . ri . hey hey za lim hey Ez aş kı me ta

. . . . . est . . . me ta . . . . . est . . . . . me ta . . . .

ve fa ne . da . . . . . ri . hey hey za lim hey

Ez ak li . ve da . . . . . est . . . . . ve da

. . . . . est . . . . . ve da . . . . . ve fa ne . a . . . ri . hey hey za lim hey

hey . hey sul ta nı men vey . . . . .

hey . hey hün kâ ri men dost rā . nā yî

men . . . hey hey hey hey hey mak bu lî men . . .

NOT :

1. Bu Ayin-i Şerif Beste-i Kadim adını taşıyan Ayin-i Şeriflerin üçüncüsüdür.
2. Bu Ayin-i Şerifin birinci Selâmındaki «Yar ey bivafa yar İnçünin» mısraları ve (Dügâh) Ayin-i Şerifinin «Ey ki hezar âferine» güftesinin sonuna kadar devam eder.
3. Buradan sonra da (Pencgâh) Ayin-i Şerifinin «Ey Kavm be'hace» güftesinden başlayarak (Pencgâh) Ayin-i Şerifle tamamlanır.

yar ey bi . . . ve fa yar in . . . cü . nln . . .

.. bi rah . . mü sen . . . . . kin dil me . baş

.. ey der . . di men . . . . . da . ni tû . im . .

.. ez ha . li mâ . . . . . a kıl me . baş . .

.. der çe me ni üf . . . . . tad . . . . .

ey . . na le i bül bül bül ca . . . . .

.. der çe me ni üf . . . . . tad . . . . .

ey na le i bül . . bül bül bül ca nim

.. Ta tû der a yi ne ya . . ri men

... cûn hay . . me i . gül ey gül

ta tû der a yi ne ya . . ri men

... cûn hay . me i . gül hey suka ni men . . . . .

.. hey hūn kā rı men . . . . hey ra'na yı men . .

.. hey mak bu lı men . . . .

## İkinci Selâm

.Evfer.

Ah . . . sul . ta ni . . . me ni .  
Ah en der di lü can

ni . . . sul ta ni . . . me ni  
Can i ma ni me ni . . .

ni . . . der men . bi . . . de mi . . .

mi . . . . men zin . . de . . . şe üem . . . .

. . . . . yek . ca . . . . . çi . . . . şe üed . . . . .

üed . . . . . sad ca . . . . . ni . . . . . men . . . . .

ni . . . ey . a . . . sı . . . kan . ey . . . .

. a . . . sı kan . . . . . men . ha . . .

ki . . ra . gev . . . . . her . . . kü mem . dost .

... ey . mut . ri . . . . . ban . ey . . . . .

mut . . . . . ri ban . . . . . ban . . . . . de . . . . . fi . . . . .

şü . . . . . ma . pür . . . . . zer . . . . . kü nem . . . . .

nem . . . . . ey mut . ri . . . . . ban . ey . . . . .

mut . . . . . ri ban . . . . . de . . . . . fi . . . . .

şü . . . . . ma . pür . . . . . zer . . . . . kü nem dost . . . . .

... za lim . . . . . yar . . . . .

ah mi . . . . . rim

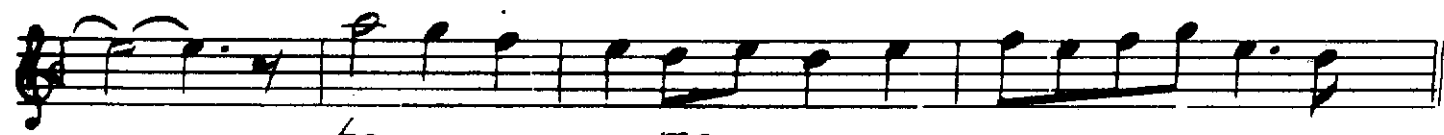
Devrikebir "Üçüncü Selâm"

128 He yi ey şeh . . . . . di . . . . .

nû . . . . . şin şin . . . . .

... ah le . . . . . be . . . . .

... ti hey pa kez . . . . .



... he ... me ...



ey a lü ... lü



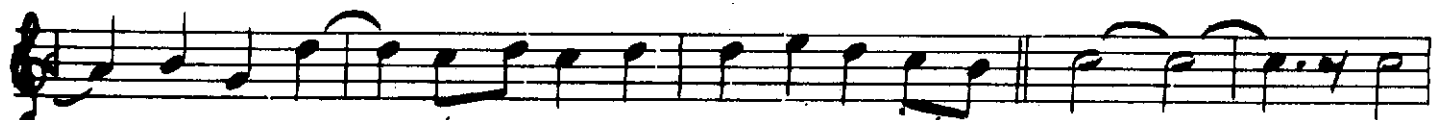
de, ... ki ... Hey ... bin



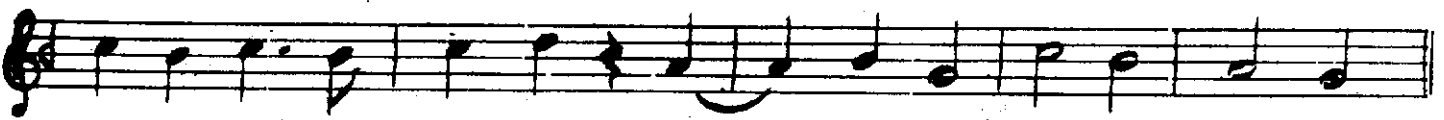
s/n ... ki ... ta ...



... ta ba zis ...



... te ... di çeş me



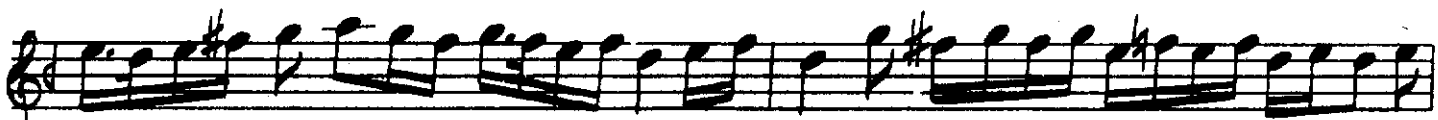
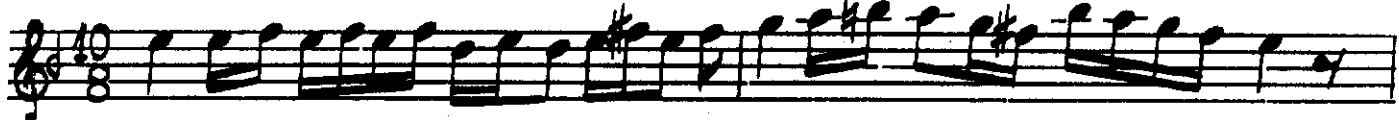
... mem ...



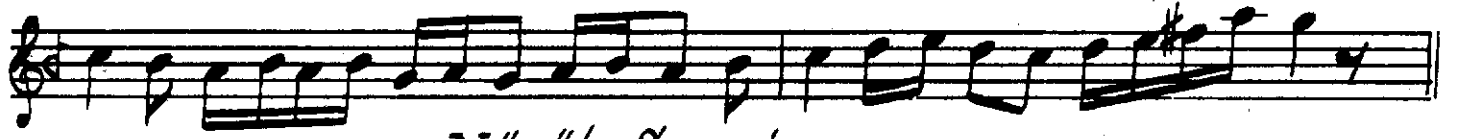
zi hun pa ... lü de ... ki

*Terennüm.*

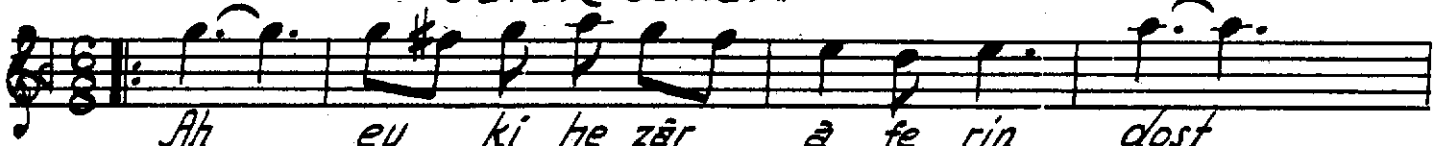
*Aksak Sema*



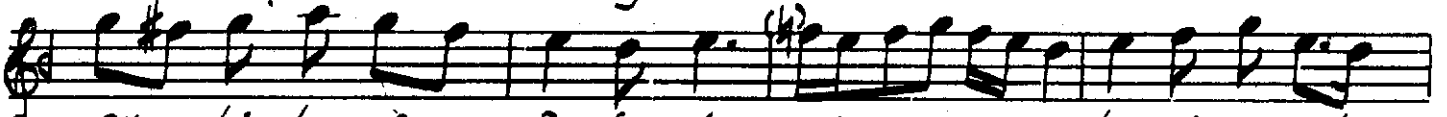




## "Yürük Semai"



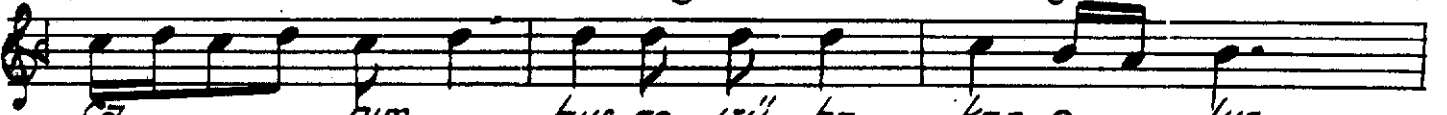
Ah ey ki he zâr â fe rin dost  
Ah her ki bu gün ve le de dost



ey ki he zâr â fe rin : : : : : bu ni ce sul  
her ki bu gün ve le de : : : : : i na nu ben



tan o lur : : : : : ku lu o lan ki ş i ler  
yüz sü re : : : : : yok sul i se bay o lur



Ca . . . . . him . hus re üü ha ken o lur  
" " bay i se sul tan o lur



yar . . . . . hus re üü ha ken o lur  
yar bay i se sul tan o lur

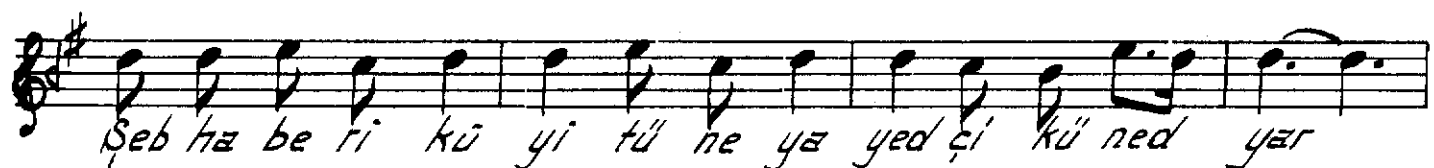
Buradan Sonra, Bu âyin-i Şerif Penc'gâh âyin-i şerifile tamamlanur.

Not: Dügâh-i kadim adını taşıyan makam bu gün kullanmakta  
olduğumuz Uşşak makamıdır.





*Terennüm*



şeb ha be ri kû yi tû ne ya yed'ci kû ned yar

Ger bu se di hed zûl fû tû ra ti re me şev vay

di va ne ki zen ci ri ne ha yed'ci kû ned yar

yar . . . yar za lim hey yar za lim yar gû lûm yar mi rim

hey yar za lim yar gû lûm yar mi rim hey . dost di va ne ki zen

ci ri ne ha yed'ci kû ned yar an gû ze lin aş ki na ha

lâ ti na . . . a man yandı yû rek aşk ha ra ra ti na

.. dost and i çe yim gay rı gû zel seume yim . . a man

Tân ri ye vû tân ri nin a ya ti na . . .  
Terepnum.

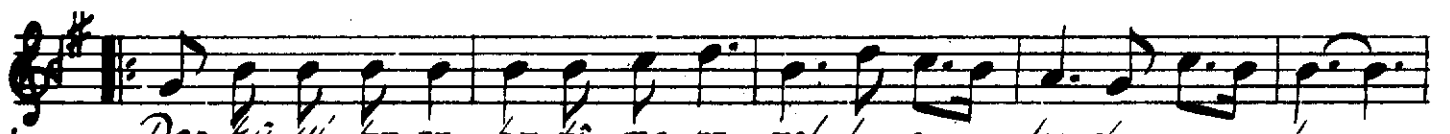
Ah mi nel aşk ve Ha lâ ti hi Ah ra ka kal bi bi ha ra  
dost mi nel aşk ve ha lâ ti hi

ra ti hi me na za ral ay nû i lâ gay rû kûm



"Terennüm"

uk si mü bil lā hi ve a ya ti hi



Der kû yi ha ra ba ti me ra ask ke san kerd . . . hey  
Men der pe yi an dîl be ri ay yâr bi ref tem hey



an dîl be ri ay ya ri me ra di dū ni san kerd. dost  
o rûy i ho dan lāh za zi men ba zi ni han kerd. dost



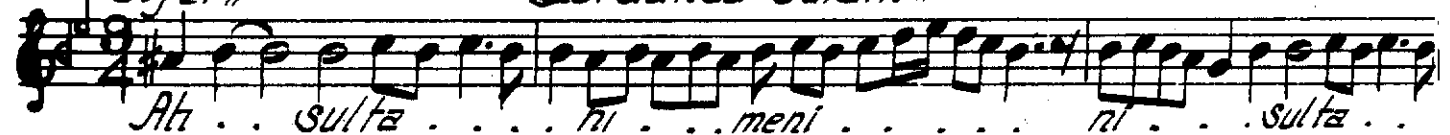
Sul ta ni a ref nāk bū des mah re mi es rar . . .



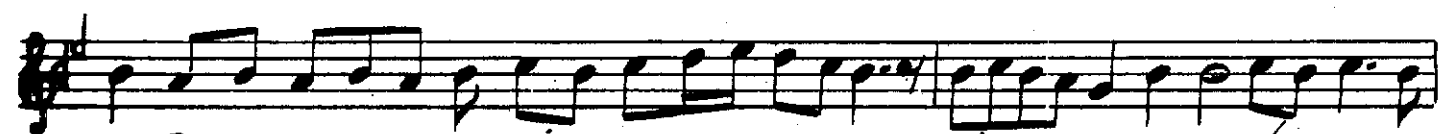
hey Tā sir ri ye cel li i e zel cūm le be yan kerd.

"Evfer"

"Dördüncü Selâm"



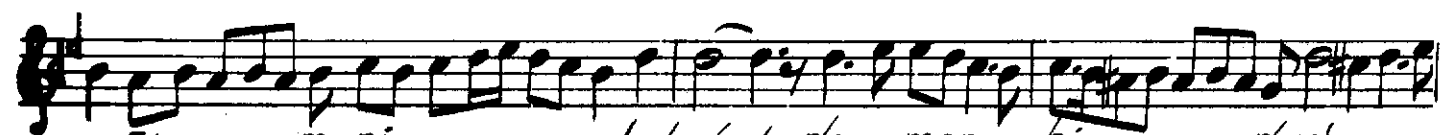
Ah . . . sul ta . . . ni . . . meni . . . ni . . . sul ta . . .



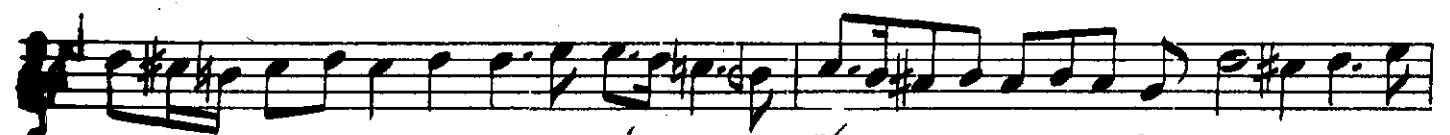
.. ni . . . me ni . . . ni . . . en der . . .



.. di . . . lū can . . . can . . . i ma . . .



.. ni . . . meni . . . hak dost der men bi . . . deml . . .



.. men zin . . . de . . . se vem . . .

... . yek. can . . . . . çî . . . . . şevêd . . . . .

ved . . . . . sad ca . . . . . nî . . . . . me nî . . . . .

ah . . . . . î ma . . . . . nî . . . . . me nî . . . . .



"Son yürük"

